



## Alfa Laval BurstClean+

Three-in-one technology for optimized tank cleaning



### Application

By combining the best features of our three key tank cleaning technologies - rotary jet heads, rotary spray heads, and static spray balls - we've discovered the answer to softening stubborn residues and quickly removing them from tank interiors. The Alfa Laval BurstClean+ nozzle, patent pending, maximizes chemical usage while drastically reducing the amount of time and water it takes to clean. The combination of an Alfa Laval rotary jet head and BurstClean+ nozzle is ideal for use in fermentation tanks, yeast manufacturing tanks, chemical reactors, jacketed tanks, and many other applications with stubborn, stuck-on residues.

The picture shown below is an example of a typical application for the BurstClean+ nozzle: a hard-to-clean yeast ring in a beer fermenter.

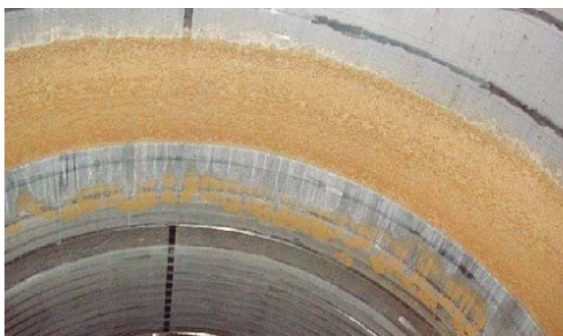


Photo courtesy of Sopura

### Working principle

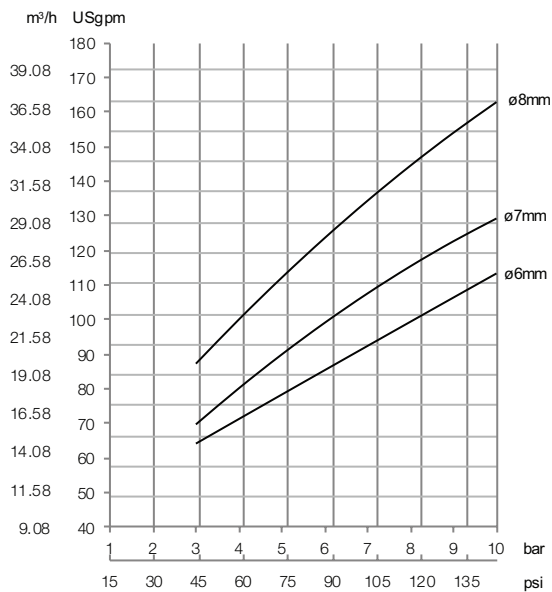
The Alfa Laval BurstClean+ is designed as a rotary jet head with a secondary spray fan nozzle outlet. The flow diverted through this outlet quickly provides full coverage of the tank wall without requiring the jet head to attain a full cleaning pattern. The hard-to-clean residues are then soaked in chemicals before the jet head breaks through its surface. The spray fan effect and distribution of chemicals does not interfere with the primary impact of the rotary jet head. Currently, this nozzle feature is compatible with the Alfa Laval TZ-74, TZ-79, and TJ 20G.

### Benefits

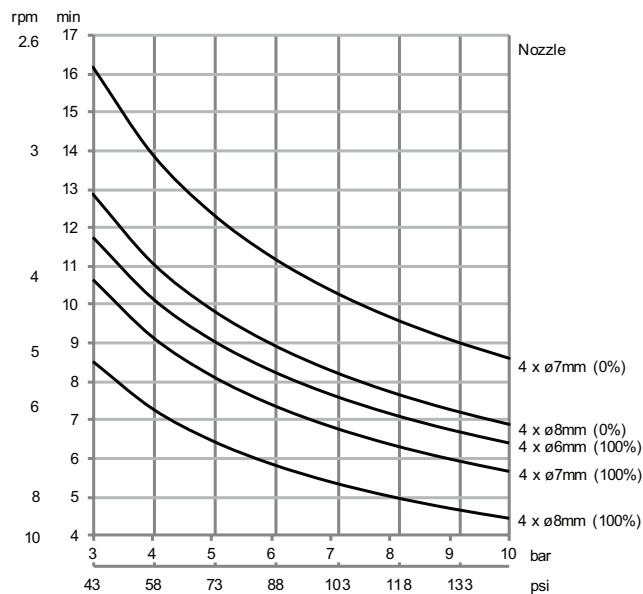
- During the tank cleaning cycle, pre-rinses are essentially eliminated with the Alfa Laval BurstClean+ due to the recommended practice of direct application of chemical or caustic to soiled tank walls.
- With the elimination of pre-rinses, time spent tank cleaning is drastically reduced, resulting in increased production times and a higher number of batches produced.
- Caustic and sanitizing steps are reduced significantly as well as water usage.
- The combination of the chemical spray fan effect and mechanical force water jet cleaning provides the best of three technologies, in a single product.

## Flow Rate

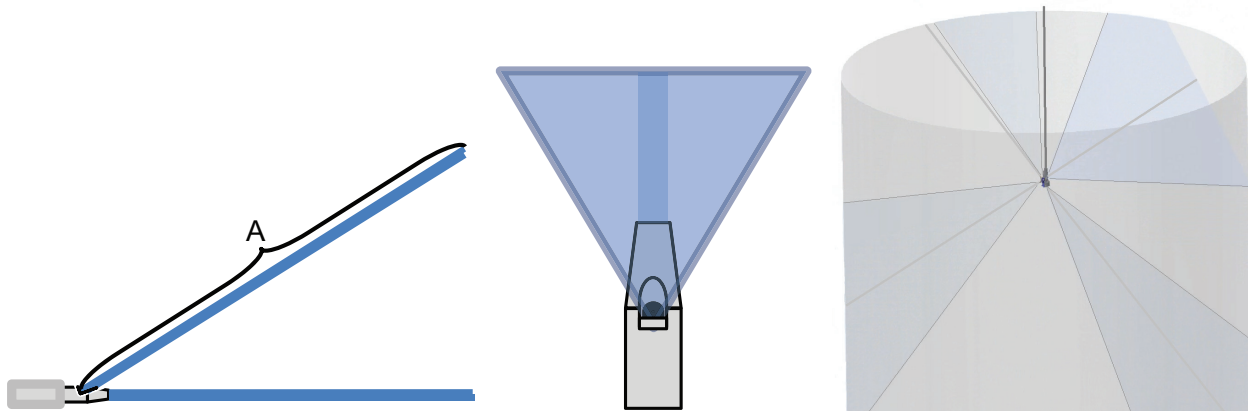
### TZ-74SC



## Cleaning Time



## Stream Dimensions



		Pressure (bar/psi)							
Nozzle		3/43.5	4/58	5/72.5	6/87	7/101.5	8/116	9/130.5	10/145
A (meter/feet)	ø6mm	3.6/11.8	5.5/18	5.5/18	5.5/18	5.5/18	5.5/18	4.4/14.4	3.6/11.8
	ø7mm	3.6/11.8	5.5/18	5.5/18	5.5/18	5.5/18	5.5/18	4.4/14.4	3.6/11.8
	ø8mm	3.6/11.8	5.5/18	5.5/18	5.5/18	5.5/18	5.5/18	4.4/14.4	3.6/11.8

Alfa Laval reserves the right to change specifications without prior notification.

### How to contact Alfa Laval

Up-to-date Alfa Laval contact details for all countries are always available on our website at [www.alfalaval.com](http://www.alfalaval.com)